

Poplar I and II



This traditional two-story home features a spacious living room, half bath, kitchen with snack bar and dining area. The Poplar II has a full bath and adds a family room and laundry. The upper level features a master bedroom suite with walk-in closet, full bath and two additional bedrooms. A sun room and utility area may be added to the main floor.

Features

- Master Bedroom Suite
- 3 Bedrooms
- 1.5 - 2 Baths
- Snack Bar
- Optional Sun Room (not available at all locations)
- 2- Stall Garage

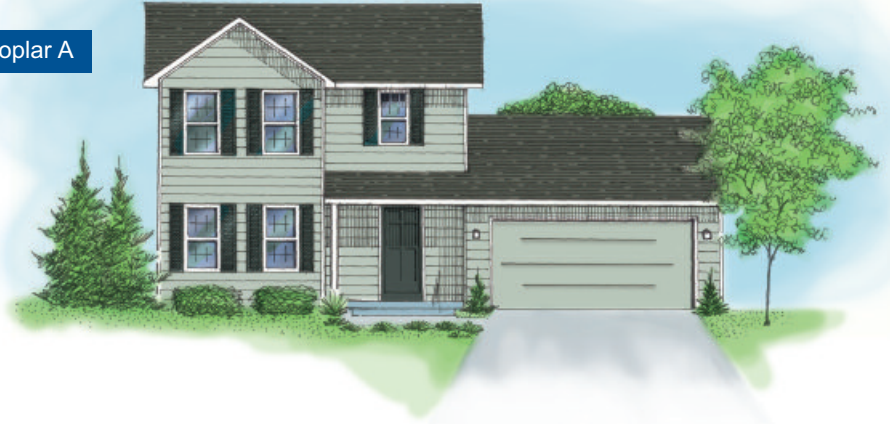
Square footage is approximate and elevations and floor plans are conceptual and not intended to be a precise description or to scale.

KBH Homes reserves the right to modify plans, specifications, colors, maps and pricing without notice or obligation. All plans are copyrighted and may not be reproduced without written consent from KBH Homes.

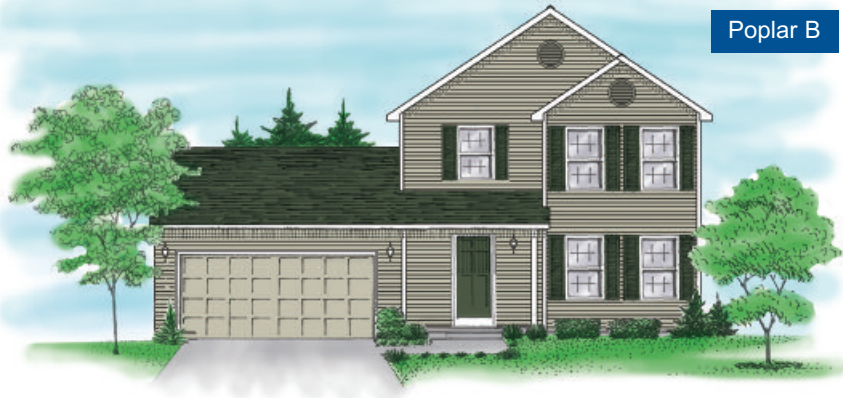


www.buildingaroundyou.com

Poplar A



Poplar B



Sunroom Option



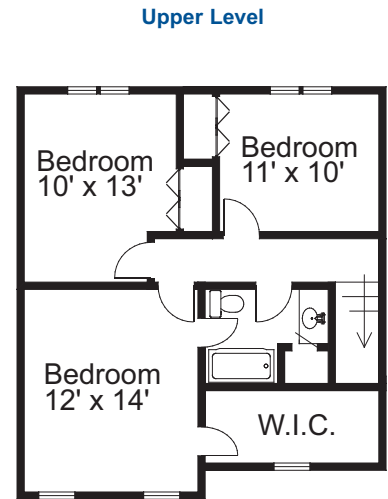
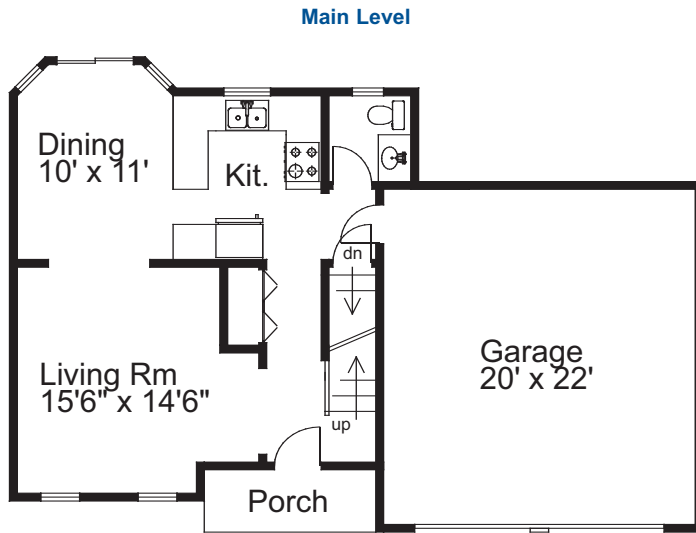
See back for floor plan options.



Each of these floor plans are available in all three exterior home styles shown on front.

Poplar I

1274 square feet



Poplar II

1520 square feet

