

Oak I, II and III Craftsman Series



This spacious bi-level home features a master bedroom, second bedroom, one or two full baths and kitchen with island and snack bar. Cathedral ceilings open up the great room and dining area which has sliders to a deck. The lower level is partially framed and can be finished to include a family room, second full bath and third bedroom.

Features

- 2-3 Bedrooms
- 1-3 Full Baths
- Great Room
- Island with Snack Bar
- Cathedral Ceilings
- 10 x 10 Deck
- Optional Family Room
- 2-Stall Garage

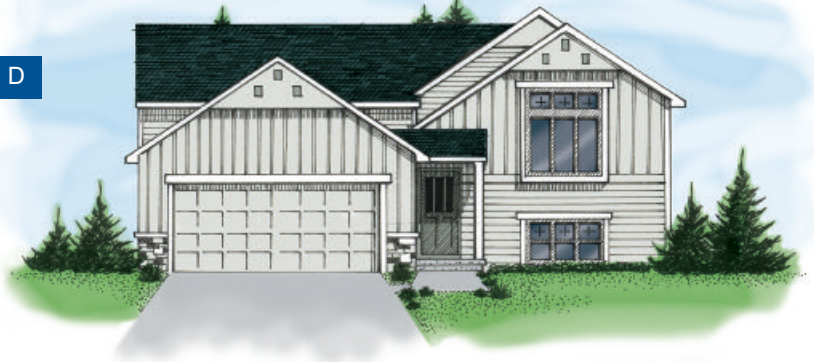
Square footage is approximate and elevations and floor plans are conceptual and not intended to be a precise description or to scale.

KBH Homes reserves the right to modify plans, specifications, colors, maps and pricing without notice or obligation. All plans are copyrighted and may not be reproduced without written consent from KBH Homes.

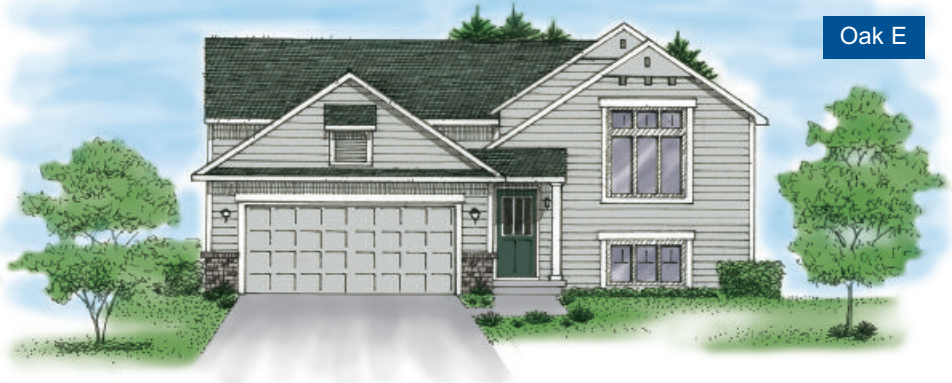


www.buildingaroundyou.com

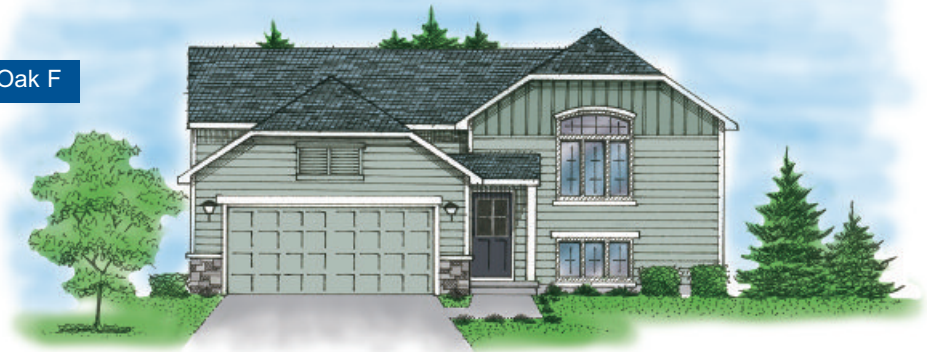
Oak D



Oak E



Oak F



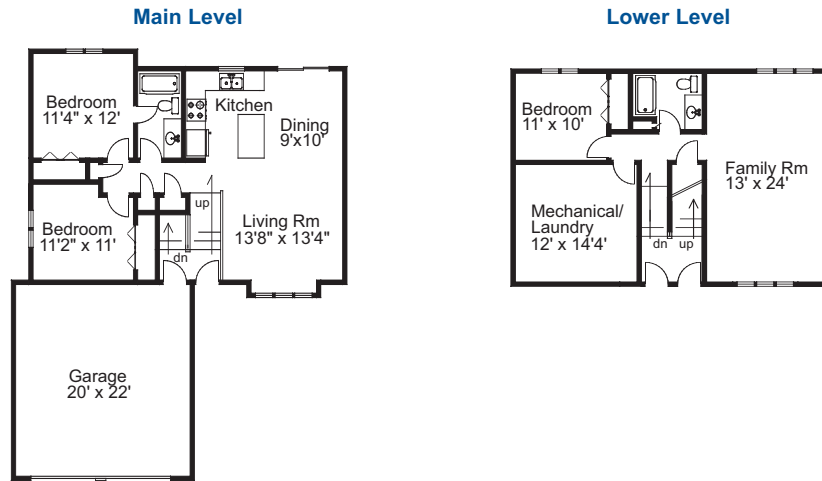
See back for floor plan options.



Each of these floor plans are available in all three exterior home styles shown on front.

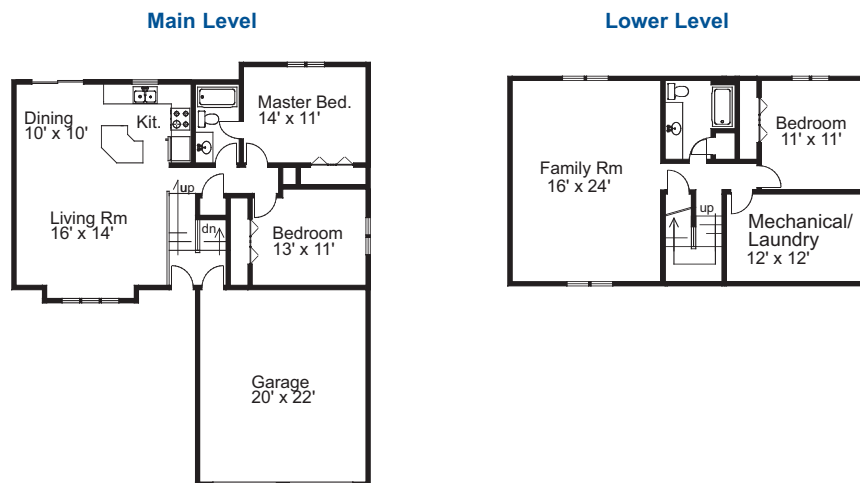
Oak I Craftsman Series

892 square feet



Oak II Craftsman Series

992 square feet



Oak III Craftsman Series

1040 square feet

