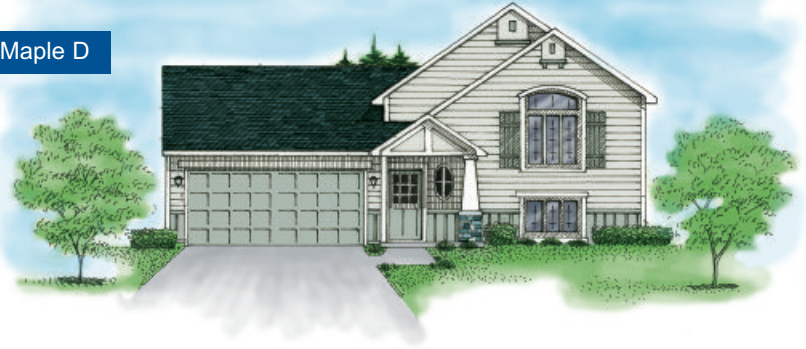


Maple Craftsman Series



This charming bi-level home features a two-story entryway, two bedrooms, full bath and kitchen. Cathedral ceilings open up the great room. The lower level is partially framed and can be finished to include a family room, second full bath and two bedrooms, adding 672 square feet.

Maple D



Maple E



Maple F



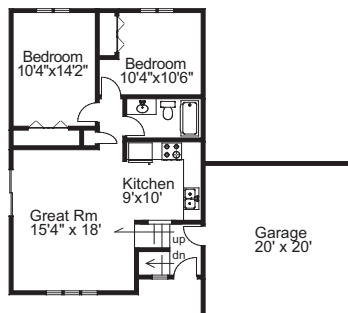
Features

- 848 Square Feet
- 2-4 Bedrooms
- 1-2 Full Baths
- Great Room
- Cathedral Ceilings
- Optional Family Room
- 2- Stall Garage

Square footage is approximate and elevations and floor plans are conceptual and not intended to be a precise description or to scale.

KBH Homes reserves the right to modify plans, specifications, colors, maps and pricing without notice or obligation. All plans are copyrighted and may not be reproduced without written consent from KBH Homes.

Main Level



Lower Level

